

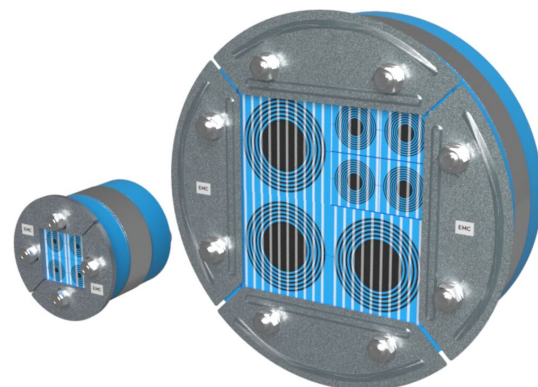


Roxtec R EMC-gennemføring

Rund EMC-gennemføring til kompakt tætning af flere kabler og rør.

Roxtec R EMC er en kabel- og rørgennemføring, der sikrer elektromagnetisk kompatibilitet. Rammen er designet til at blive installeret i ledende rør. Komprimeringen er indbygget i rammen, og den tætnes ved at udvide sig når denne spændes. Man kan vælge mellem Roxtec ES-moduler for elektromagnetisk skærmning, og PE-moduler, der beskytter mod elektrisk ledede forstyrrelser. Tætningsmodulerne tilpasses kabler og rør af forskellig størrelse, og kan bruges til at indbygge reservekapacitet i gennemføringen. Brug Roxtecs EC spændingstester til at få en indikation af den elektriske ydeevne for installationer udført med Roxtec BG™ eller ES.

- Pladsbesparende
- Nem at vedligeholde og inspicere



Produktgenskaber



Brandklassificeret



Vandtæt



Gastæt



EMI-beskyttelse

Byggekonstruktion



Metal

Monteringstype



Oprindeligt sleeve

Normeringer og certifikater

Brand

- A-KLASSE i henhold til IMO 2010 FTP-kode
- E/EI-klassificering i henhold til EN 13501
- F/T-klassificering i henhold til UL 1479
- H-KLASSE i henhold til IMO 2010 FTP-kode + HC-brandbelastningskurve

Tæthed

- Gas: 2,5 bar (katastrofe)
- Vand: 4 bar (katastrofe)

Understøtter

- Elektromagnetisk skærmning
- Potentialudligning

Rammedimensioner

mm/kg

De nedenstående rammevarianter udgør et begrænset udvalg. Du kan se hele udvalget af rammer og konfigurationer på [roxtec.com](https://www.roxtec.com).

Titel	Pakkeareaö	Åbningsmål Ø	Vægt	Art.-nr.
R 75 EMC AISI316	40 x 40	75 - 77	0.5	ER00A00751121
R 100 EMC AISI316	60 x 60	100 - 102	0.8	ER00A01001121
R 125 EMC AISI316	80 x 80	125 - 127	1	5ER0000004913
R 127 EMC AISI316	80 x 80	127 - 129	1	ER00A01271121
R 150 EMC AISI316	90 x 90	150 - 152	1.7	ER00A01501121
R 70 EMC AISI316	40 x 40	70 - 72	0.46	ER00A00701121
R 200 EMC AISI316	120 x 120	200 - 202	2.7	ER00A02001121

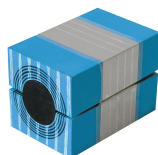


Data om tætningskomponenter

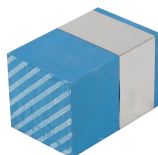
Tætningskomponenter



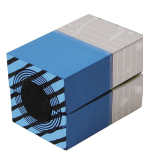
Lubrikant



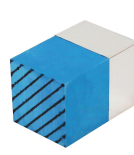
RM ES-modul med
Multidiameter™



RM ES fast
kompensationsmodul



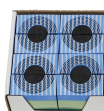
RM PE-modul med
Multidiameter™



RM PE fast
kompensationsmodul



tilbehør ES og BG



R ES-tætningskit

For mer information, besøg venligst [roxtec.com](https://www.roxtec.com).

The product information provided by Roxtec does not release the purchaser of the Roxtec system, or part thereof, from the obligation to independently determine the suitability of the products for the intended process, installation and/or use.

Roxtec gives no guarantee for the Roxtec system or any part thereof and assumes no liability for any loss or damage whatsoever, whether direct, indirect, consequential, loss of profit or otherwise, occurred by the Roxtec systems or installations containing components not manufactured by an authorized manufacturer and/or occurred or caused by the use of the Roxtec system in a manner or for an application other than for which the Roxtec system was designed or intended.

Roxtec expressly excludes any implied warranties of merchantability and fitness for a particular purpose and all other express or implied representations and warranties provided by statute or common law. User determines suitability of the Roxtec system for intended use and assumes all risk and liability in connection therewith. In no event shall Roxtec be liable for indirect, consequential, punitive, special, exemplary or incidental damages or losses.

The Roxtec products are offered and sold in accordance with the conditions of the Roxtec General Terms of Sales. The latest version of the Roxtec General Terms of Sales can be downloaded from <https://www.roxtec.com/en/about-us/about-roxtec/general-terms-of-sales/>

We reserve the right to make changes to the product and technical information without further notice. Any errors in print or entry are no claims for indemnity. The content of this publication is the property of Roxtec International AB and is protected by copyright.

This document was generated on: 2024-04-17